



# 2020 PURE

SPRINGBOK COLLECTION

LEATHER HANDBAGS | HOMEWARE  
EST. 1998  
**FSP COLLECTION**  
HANDCRAFTED  
CAPE TOWN  
FSPCOLLECTION.COM



# PURE SPRINGBOK COLLECTION

The FSP Collection presents the best of South African design - expertly hand-crafted in Cape Town by skilled artisans dedicated to their craft.

We bring you a deliberately designed collection of unique handbags inspired by Africa and it's people manufactured with love in the FSP Studio.



## KERRI

A functional casual Tote that will hold all your needs for a busy on-the-go day.

An unusual feature is the hand-braiding on each side of the centre springbok panel showing the mane. The inside of the bag has the added luxury of being lined with tan suede and features a large pocket to keep all your precious things safe.

SC37 | H 32 W 40 D 14CM



## LASSIE

This style is the classic rounded bowling bag shape with a top handle. Its lines are very elegant and ladylike and has a double zipper detail featuring a metal zip and leather pulleys. Add to this a luxurious tassel and you have one classy handbag.

SC21 | H 30 W 38 D 10,5CM





## STEPHIE

An expandable Tote which changes shape once the sides are press-studded to the main body. The style can be carried by the top handles and also features a detachable shoulder strap. Offered with nickel or antique brass hardware. This style has a lovely slouchy softness about it.

SC23 | H 37 W 40 D 6CM





## BELT BAG

The easygoing rounded belt bag is a high fashion item and can be worn as a belt with your favourite jeans or casually slung around the hips.

We have also made the FSP version even more unique by adding a panel of springbok hair-on hide. There is a zip fastening along the top of the bag for easy access.

SC52 | H 17 W 30 D 1CM

## LOLA SATCHEL

A two buckle messenger provides a casual chic compliment to your everyday style with plenty of space for all your essentials.

It can be carried as a handbag, hands-free across the body or on the shoulder thanks to the adjustable shoulder strap. A hidden magnetic clip is used to hold the flap in place.

SC150 | H 34 W 37CM





## SKYLAR

The versatile satchel style bag which can be carried by the two top handles or by the detachable shoulder strap. The bag takes on a draped shape and there is an interesting button detail on the handles attaching the short straps to the handbag.

A dropped zip makes the closure invisible and the springbok hair-on panel is placed sideways for a slight twist.

IW08 | H 28 W 36 D 10CM







## BARREL

This functional popular barrel silhouette has tube handles providing a comfortable way to carry either over the shoulder or in your hand. An added feature is the "metal" zip closure which makes it very safe. A lovely everyday handbag.

SC18 | H 26,5 W 32 D 13CM

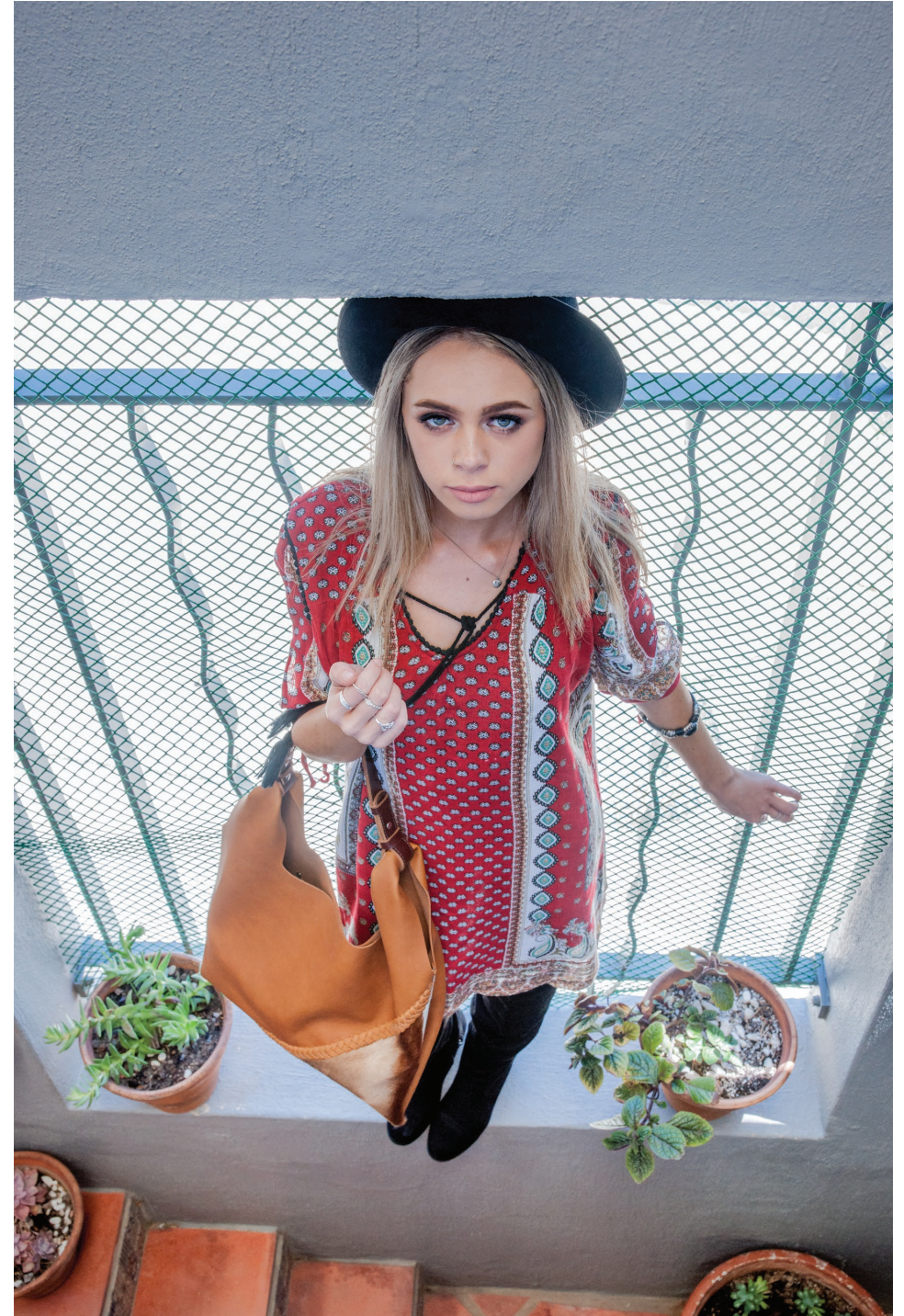




## CASSEY

A casual raw edge, unlined Shopper. Understated springbok detail enhanced with hand-braiding. Easy access to large back and inside pockets. Contrast leather strap makes it comfortable on the shoulder. Very light, so ideal for travelling as it can be packed flat.

SC06 | H 38 W 38 D 8CM





[www.fspcollection.com](http://www.fspcollection.com) | Instagram: @ fsp\_collection  
Email: [info@fspcollection.co.za](mailto:info@fspcollection.co.za)

